

NEW HOPE ROAD OUTPARCELS

FOR SALE

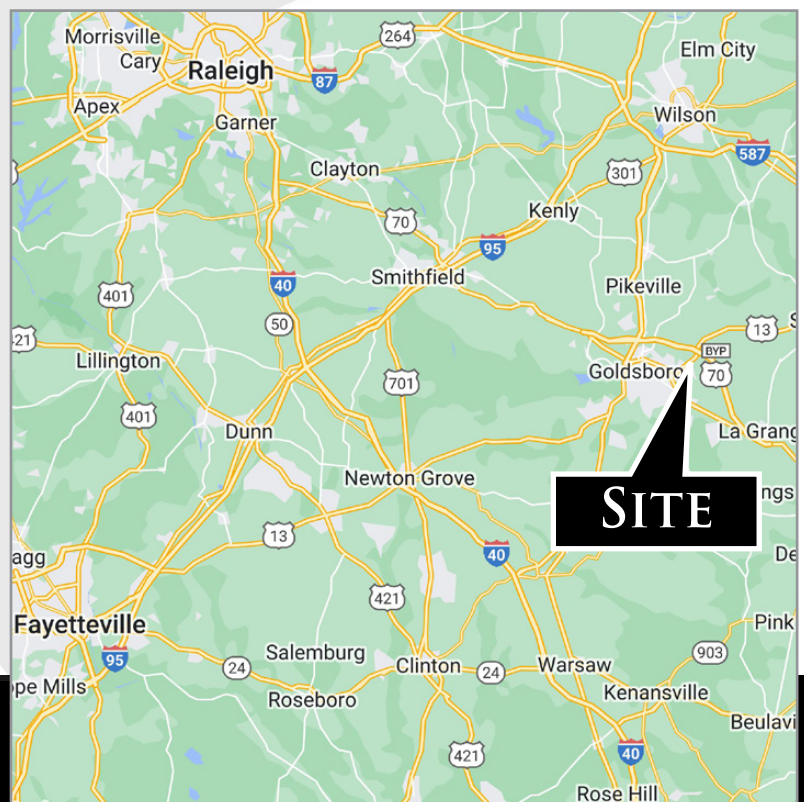
Goldsboro, North Carolina 27534



OUTPARCELS AVAILABLE AT NEW HOPE PLAZA

PROPERTY HIGHLIGHTS:

- ▶ 55,000+/- SF shopping center anchored by Food Lion & Family Dollar
- ▶ Located along New Hope Road near the signalized intersection of Central Heights Road, just off Route 13 (Berkeley Blvd).
- ▶ Zoned Commercial, Public Utilities Available
- ▶ New Hope Road Traffic - 10,500 vpd
- ▶ Contact Broker for Pricing



Nathan S. Jones, IV

nathan.jones@domcommercial.com

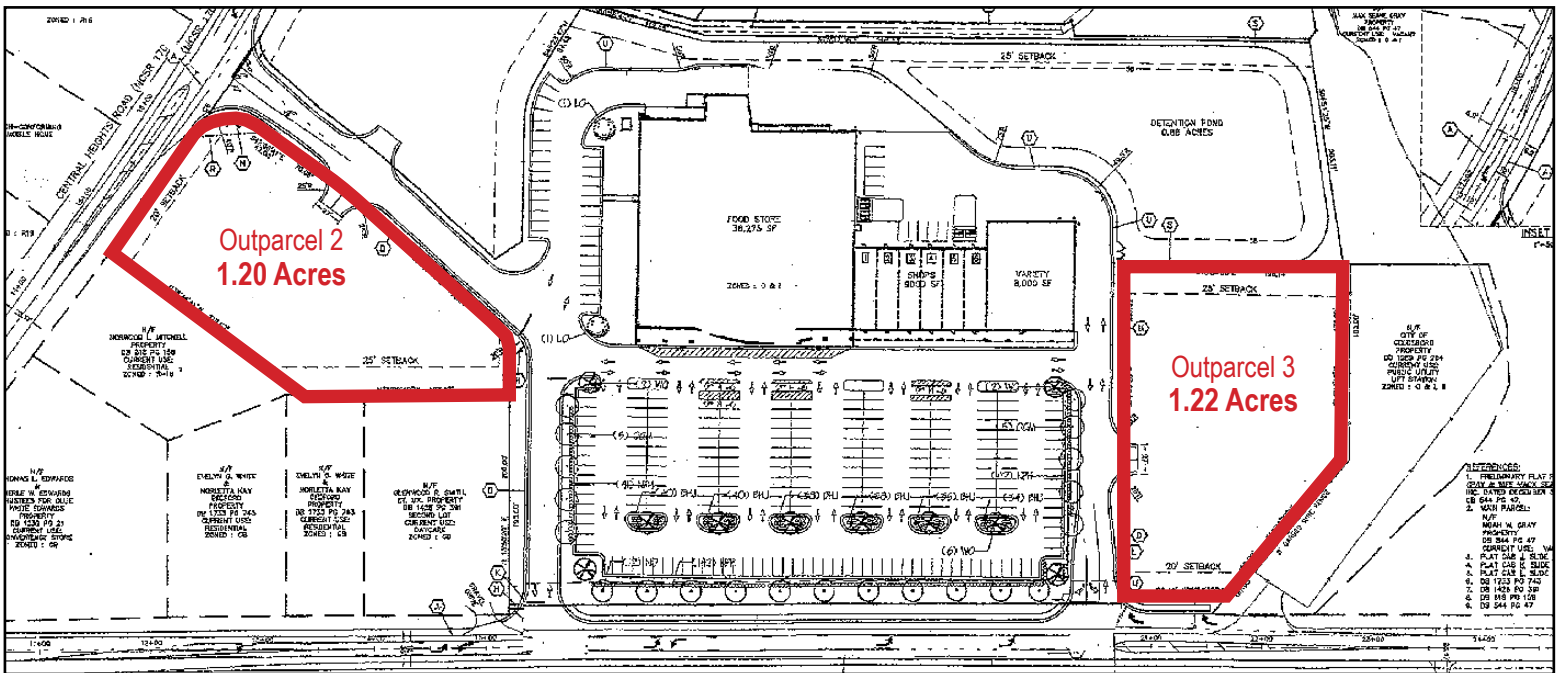
855.530.2300

domcommercial.com

NEW HOPE ROAD OUTPARCELS

FOR SALE

Goldsboro, North Carolina 27534



Nathan S. Jones, IV
 nathan.jones@domcommercial.com
 855.530.2300

domcommercial.com